

There are more locations and more ways to vote this General Election



Advance Vote:
October 6 – 11, 2025

42 total
Advance Vote stations
↑ 5 more than 2021

You can Advance Vote anywhere!

Voting stations will be open from 10 a.m. to 7 p.m. Oct. 6-11, 2025.
For a full list of available Advance Vote opportunities, including locations and times, visit electionscalgary.ca/vote

The Vote Bus is back!

It will be making **11 stops**



from Oct. 6-11 (1-2 per day) at various community locations.
Anyone can cast their ballot at the Bus!
Visit electionscalgary.ca/vote to see the Vote Bus schedule.

Election Day:
October 20, 2025

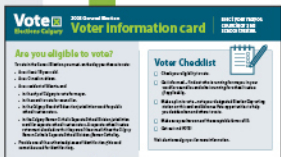
261 total designated Election Day voting stations
↑ 73 more than 2021

All ballots will be hand counted in 2025, which means results will take longer to finalize.



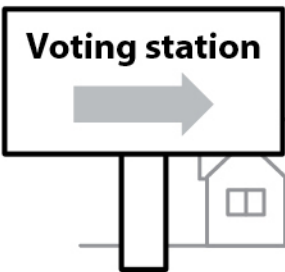
To help reduce counting time while still maintaining counting process integrity and to accommodate for population growth, Elections Calgary greatly increased the number of voting stations in 2025.

Voters are required to vote at designated voting stations during Election Day. A voter information card will be mailed to each household with assigned voting stations or you can use the Where Do I Vote tool online at electionscalgary.ca/wheretovote.



Selecting voting stations

There are several locations and times to make it as convenient as possible for people to vote. Using a community-based approach, we selected voting stations that are close to home and easy to access, such as:



Hospitals



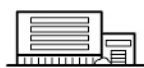
Schools and campuses



Places of worship



Community Centres



Recreation Centres

CAMPUS LOCATIONS
10 a.m. – 7 p.m.

Mount Royal University
Oct. 6 and 7
Location: Roderick Mah Centre
SAIT
Oct. 6 and 7
Location: Aldred Centre, Room CA121
University of Calgary
Oct. 8 and 9
Location: Dining Centre

Special (mail-in) ballots



Voters who are unable to vote during Advance Vote or on Election Day may apply to vote by mail-in ballot through electionscalgary.ca/mailinballot

Elections Calgary's priority is to deliver an election that is safe and accessible to all eligible voters.

The stations have been carefully selected so that they are easy to access whether driving, walking, cycling or taking transit.



90% of registered electors are within a 5 minute drive of their Election Day stations.



21 of 41 Advance Vote stations are within 1 KM of LRT/BRT/Max public transit stop.



260 of 261 Election Day stations are within 800 metres of regular service stops (~10 minute walk).

Accessibility

All voting stations have been inspected for accessibility. Accessibility considerations for community voting stations will be made available on electionscalgary.ca. On-site language translation will also be available at many locations.

